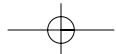
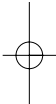
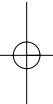


**NEW**

# AIR - FLOW<sup>®</sup> handy 2



AIR-FLOW® handy 2

CLASSIC\_MODERN

# AIR-FLOW® handy 2 BALANCE AT YOUR FINGERTIPS

**HANDY, MOBILE AND FLEXIBLE**

- A CLASSIC FOR PROPHYLAXIS
- INNOVATIVE FOR PROSTHETICS

REGARDLESS OF INDICATED TREATMENT, THE NEW  
AIR-FLOW® handy 2 DELIVERS.

UNIQUE DESIGN FOR OPTIMUM BALANCE →

**THE ORIGINAL AIR-FLOW® METHOD**

**AIR-FLOW® handy 2**

PRECISE\_INNOVATIVE

**SWISS PRECISION AND DESIGN COMBINED  
WITH THE LATEST IN HIGH-TECH MATERIALS\*.  
RENOWNED SWISS QUALITY,  
ATTENTION TO DETAIL AND CRAFTSMANSHIP.  
THE LATEST TECHNOLOGICAL ADVANCES.  
UNIQUE AND PATENTED →**

\* PEEK, the titanium of plastics, combined with medical-grade stainless steel.



- > Simply snaps in place; no installation costs
- > Easily adapts to turbine connections
- > Safety valves in air and water lines
- > Air and water line filters to prevent contamination
- > Handpiece nozzle made of PEEK and stainless steel
- > Handpiece nozzle fully autoclavable up to 134°C/273°F
- > Specially designed tubing to prevent clogging of powder
- > Easy maintenance

**→ STATE-OF-THE-ART TECHNOLOGY  
AND INNOVATIVE DESIGN**

**AIR-FLOW® handy 2**  
EFFECTIVE\_COMFORTABLE



> The original AIR-FLOW® method: a blend of modified sodium bicarbonate and air combines with water to produce a precise jet spray

→ **EFFECTIVE AND COMFORTABLE TREATMENT FOR PRACTITIONER AND PATIENT ALIKE**

- > Prophylaxis powder for AIR-FLOW® handy, specially developed for the original AIR-FLOW® method
- small, rounded particles; less abrasive
  - unique flow and water repellency; prevents clogging
  - new, pleasing lemon taste
  - individual patient packages for easy handling



# A FORMULA FOR SUCCESS

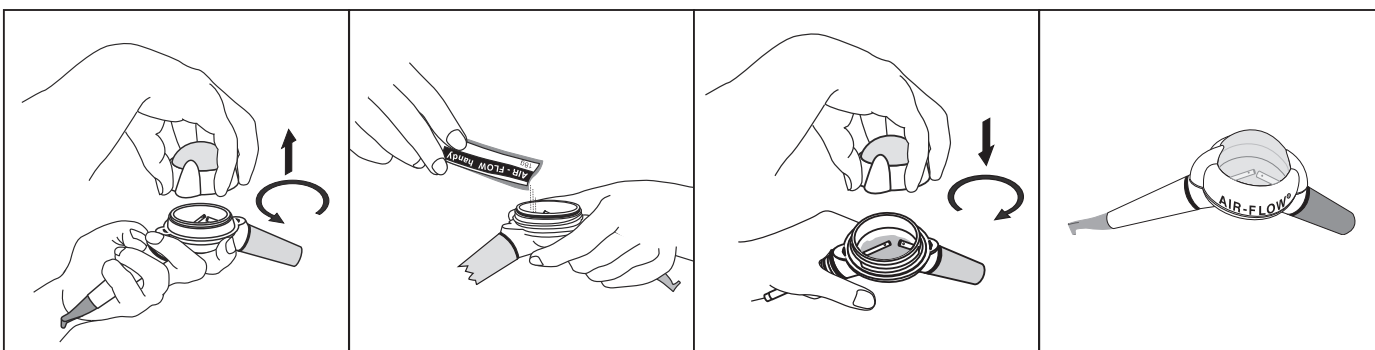
**AIR-FLOW® handy 2**

PRACTICAL\_PRACTICAL

# IT'S NO SECRET: OUR POWDER FORMULA IS SPECIAL →

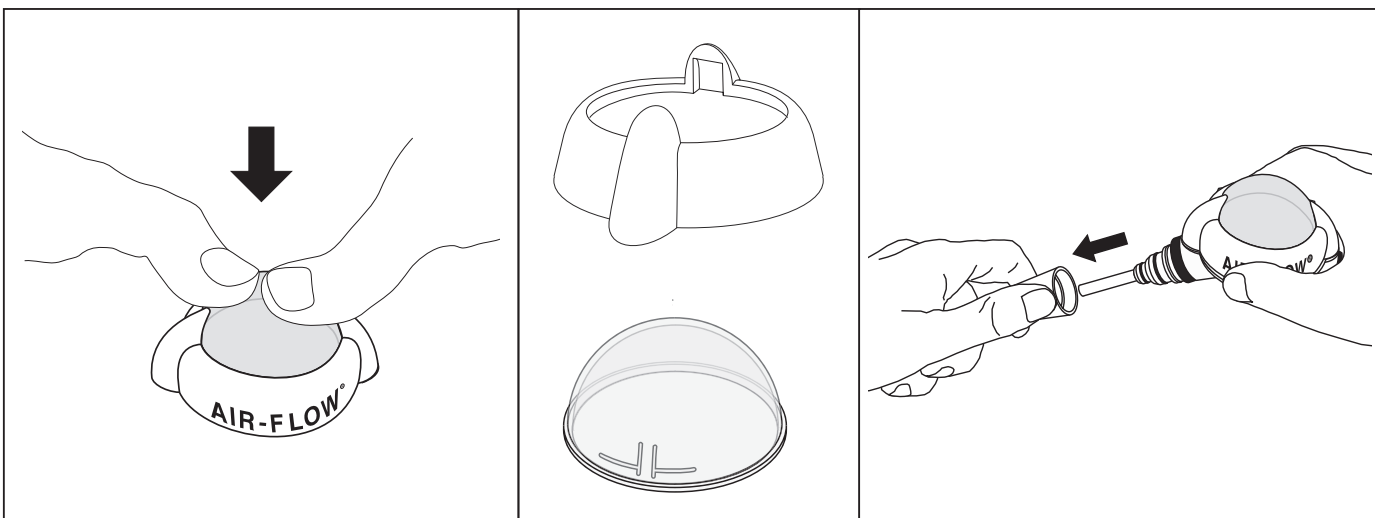
- EXTRA-LARGE POWDER CHAMBER, 25% LARGER THAN AIR-FLOW® handy 1
- EASY TO FILL
- HOLDS ENOUGH POWDER FOR A COMPLETE TREATMENT

**BUT THE BENEFITS ARE NO SECRET**



- POWDER CHAMBER CAP, EASY TO REMOVE AND REPLACE
- POWDER CHAMBER CAP, SPECIALLY DESIGNED WITH TRANSPARENT DOME; REMOVABLE, EASY TO CLEAN
- QUICK-CONNECT HANDPIECE NOZZLE, EASY TO TAKE ON AND OFF

**EASY CLEANING AND MAINTENANCE**



**AIR-FLOW® handy 2**  
COMFORTABLE\_SIMPLE

**NOZZLE 120°**



**NOZZLE 90°**

(optional)



# HANDPIECE NOZZLE

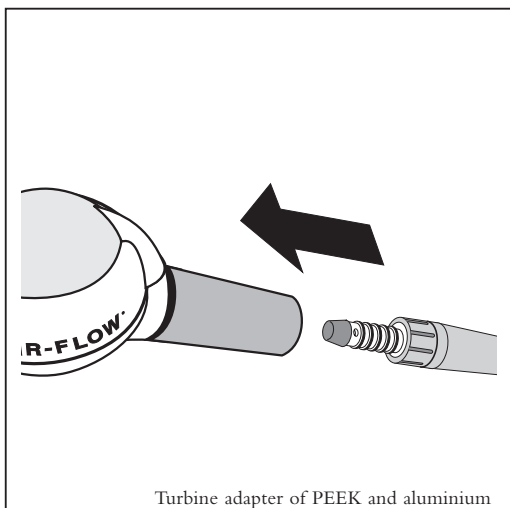
## BENEFITS →

- NOZZLE WITH STANDARD 120° ANGLE, FOR UNIVERSAL USE
- NOZZLE WITH 90° ANGLE, FOR ACCESS TO LINGUAL SURFACES OF MANDIBULAR AND MAXILLARY TEETH
- ROTATES 360°

**OPTIMUM VISIBILITY AND ACCESSIBILITY TO ALL AREAS – USER-FRIENDLY AND STATE-OF-THE-ART PATIENT CARE →**

> 90° or 120° rotating handpiece nozzle combined with optimum balance and comfortable grip; ergonomically designed and sterilizable.

> AIR-FLOW® handy 2 – the original AIR-FLOW® method – at your fingertips, always within easy reach.



**AIR-FLOW® handy 2**  
**IT'S A SNAP**

**AIR-FLOW® handy 2**

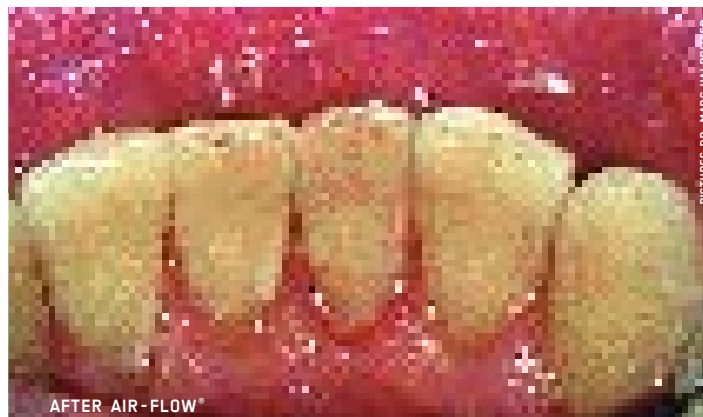
FLEXIBLE\_FLEXIBLE

# ORIGINAL AIR-FLOW® METHOD →

## EFFICIENTLY REMOVES STAIN AND PLAQUE

- > Removal of bacterial plaque helps maintain optimum oral health.
- > Facilitates uptake of fluoride on clean tooth surfaces.

→ AIDS IN THE PREVENTION OF GINGIVITIS, PERIODONTITIS AND CARIES



PICTURES DR. MARC HALBRITZER

## WHEN PLACING SEALANTS

- > Cleaning fissures before sealing reduces the risk of caries and improves the retention of sealants.

→ MINIMIZES THE RISK OF CARIES; IMPROVES RETENTION



PICTURES MATSUOKO DENTAL UNIVERSITY



**AIR-FLOW® handy 2**

FLEXIBLE\_FLEXIBLE

## IN ORTHODONTICS

- > Prepares surfaces before bonding; cleans fixed bands and brackets; removes adhesive residue.
- > Most effective method of stain and plaque removal for orthodontic patients.

→ REDUCES TREATMENT RISKS



## IN PROSTHETICS, IMPLANTOLOGY

- > Cleans surface to improve retention of composites, ceramic inlays, onlays, crowns and veneers.
- > Removes stain to facilitate shade determination.
- > Cleans implant fixtures prior to loading.

→ EXTENDS THE LIFE OF DENTAL RESTORATION (IMPROVEMENT OF THE BONDING PROPERTIES)

## IN COSMETIC DENTISTRY

- > AIR-FLOW® treatment prior to bleaching improves results by eliminating the “bleach blocking” smear layer.

→ HELPS TO PLAN EFFECTIVE TREATMENT

## SCIENTIFICALLY PROVEN\*

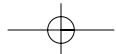
\* Mahlendorff M. 1985, Untersuchung über Abrasion und Oberflächenveränderung auf Zahnschmelz > Ramaglia L. et al. (1999), Cleaning in orthodontic patients > Prof. Miyazawa H. et al. (2001), Pits and fissure cleaning > Bochar R. (1995), Effektivität bei der Reinigung von Implantaten



**AIR-FLOW® handy 2**

INTELLIGENT MULTI-FUNCTIONAL

**“I FEEL  
GOOD”**



**AIR-FLOW® handy 2**

FIND OUT MORE

# ...AND CASHFLOW IN PROPHYLAXIS

THE ORIGINAL AIR-FLOW® METHOD IS A VALUABLE SERVICE FOR THE PATIENT, THE IDEAL TOOL FOR PRACTICE MARKETING, SUPPORTED BY EFFECTIVE PATIENT BROCHURES, ATTRACTIVE POSTERS, ETC...

FOR MORE INFORMATION ON →

- MARKETING SUPPORT
- ORIGINAL AIR-FLOW® METHOD
- INDIVIDUAL PRACTICE SUPPORT

CONTACT EMS USA OR YOUR DENTAL DEALER

→ **FAX +1 972 690 8981**

ADDRESS-PHONE →

**EMS**<sup>+</sup>  
ELECTRO MEDICAL SYSTEMS

EMS AMERICA  
12092 Forestgate, Dallas  
Texas, 75243 USA  
Tel. 800 367 0367  
Tel. 972 690 8382  
Fax 972 690 8981  
emsusa@ix.netcom.com

EMS SA  
Ch. de la Vuarpillière 31  
CH- 1260 Nyon  
Tel. +41 22 99 44 700  
Fax +41 22 99 44 701  
welcome@ems-ch.com

Inquiries also invited by post, e-mail or phone



**EMS\_SWISSQUALITY.CH**  
[www.ems-swissquality.ch](http://www.ems-swissquality.ch)

